

# Searching The Cosmos For Planetary Nebulae

Peter Goodhew FRAS  
[www.imagingdeepspace.com](http://www.imagingdeepspace.com)



**CEDIC**

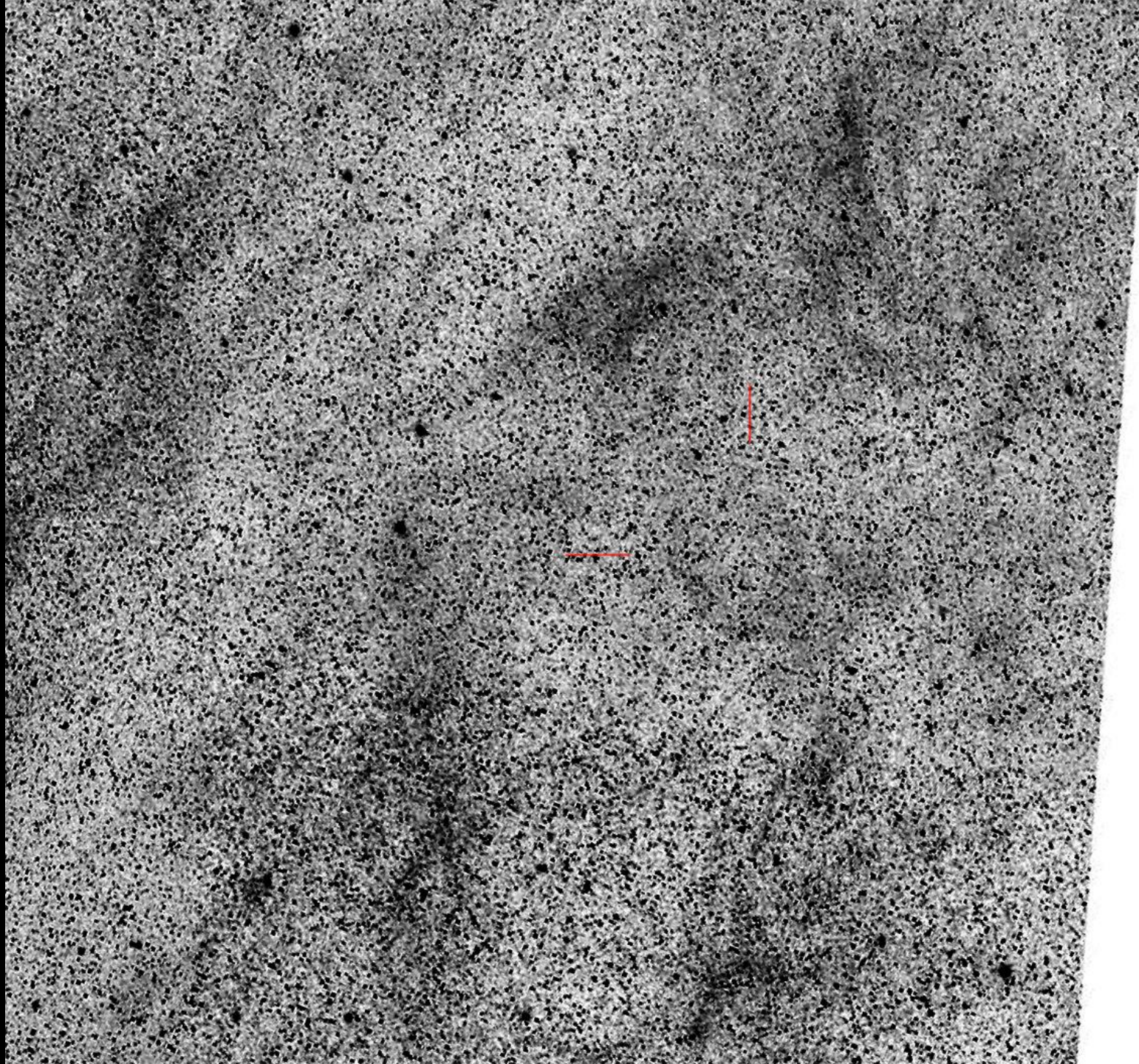
**Linz**

**24<sup>th</sup> March 2024**





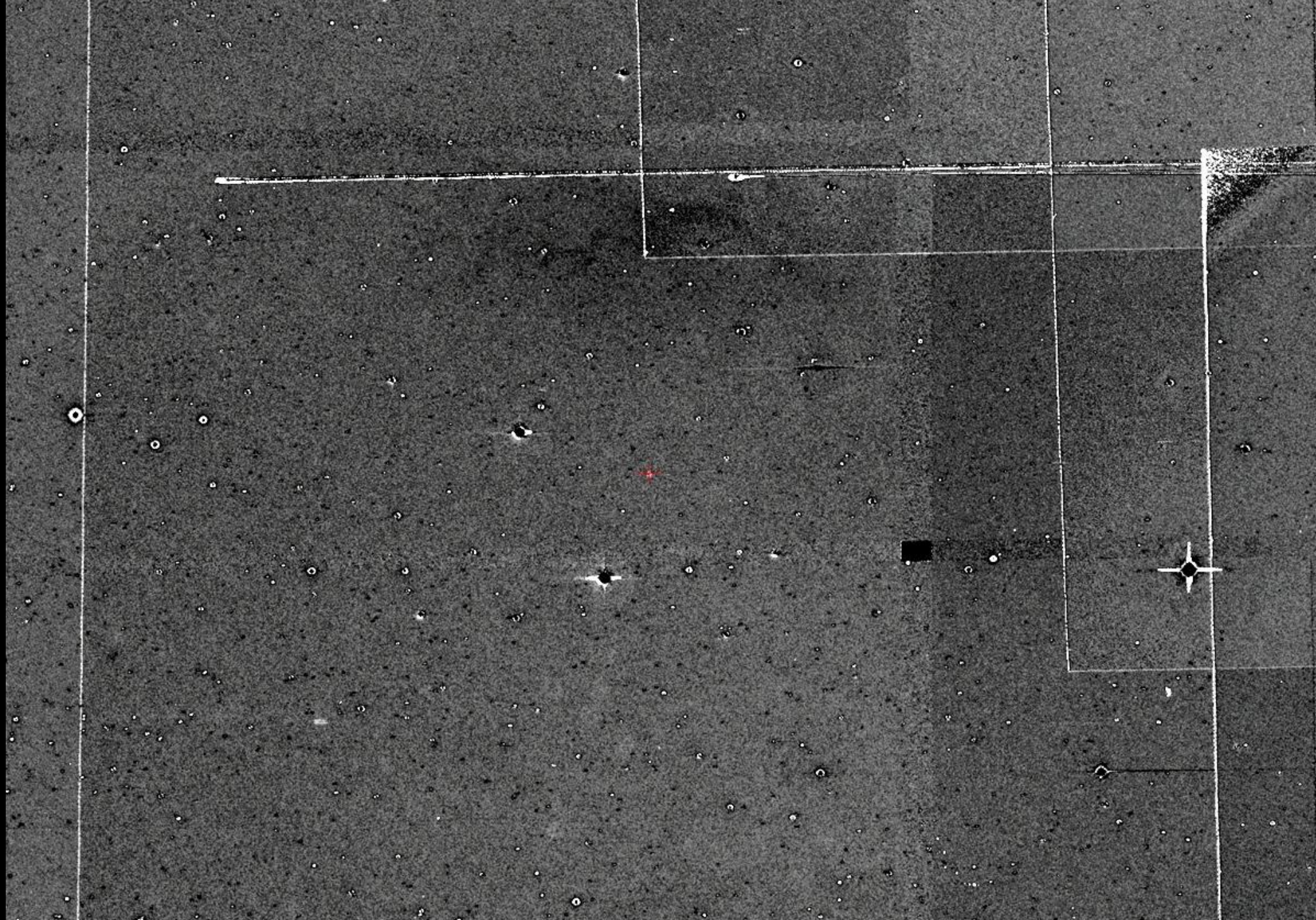






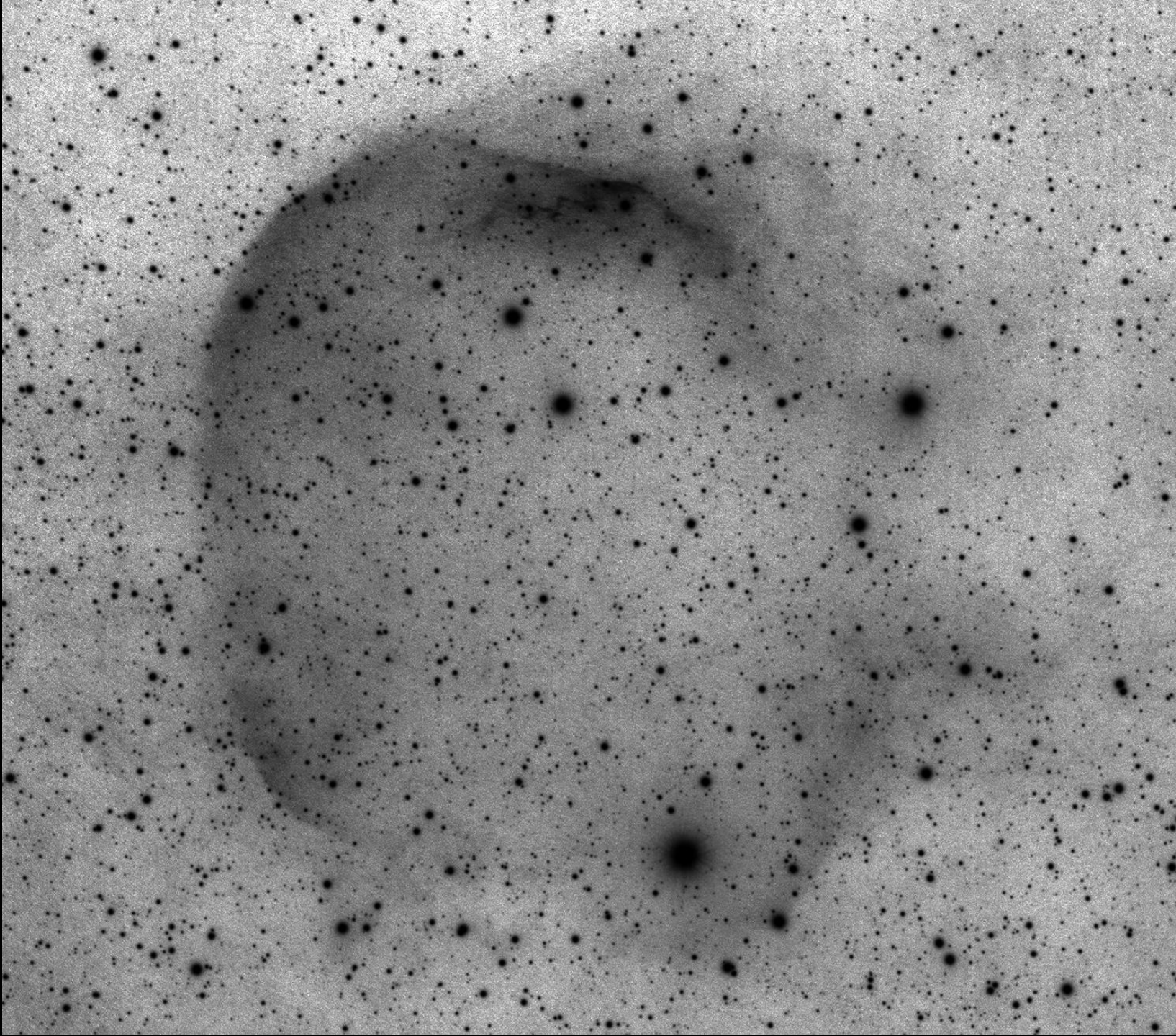




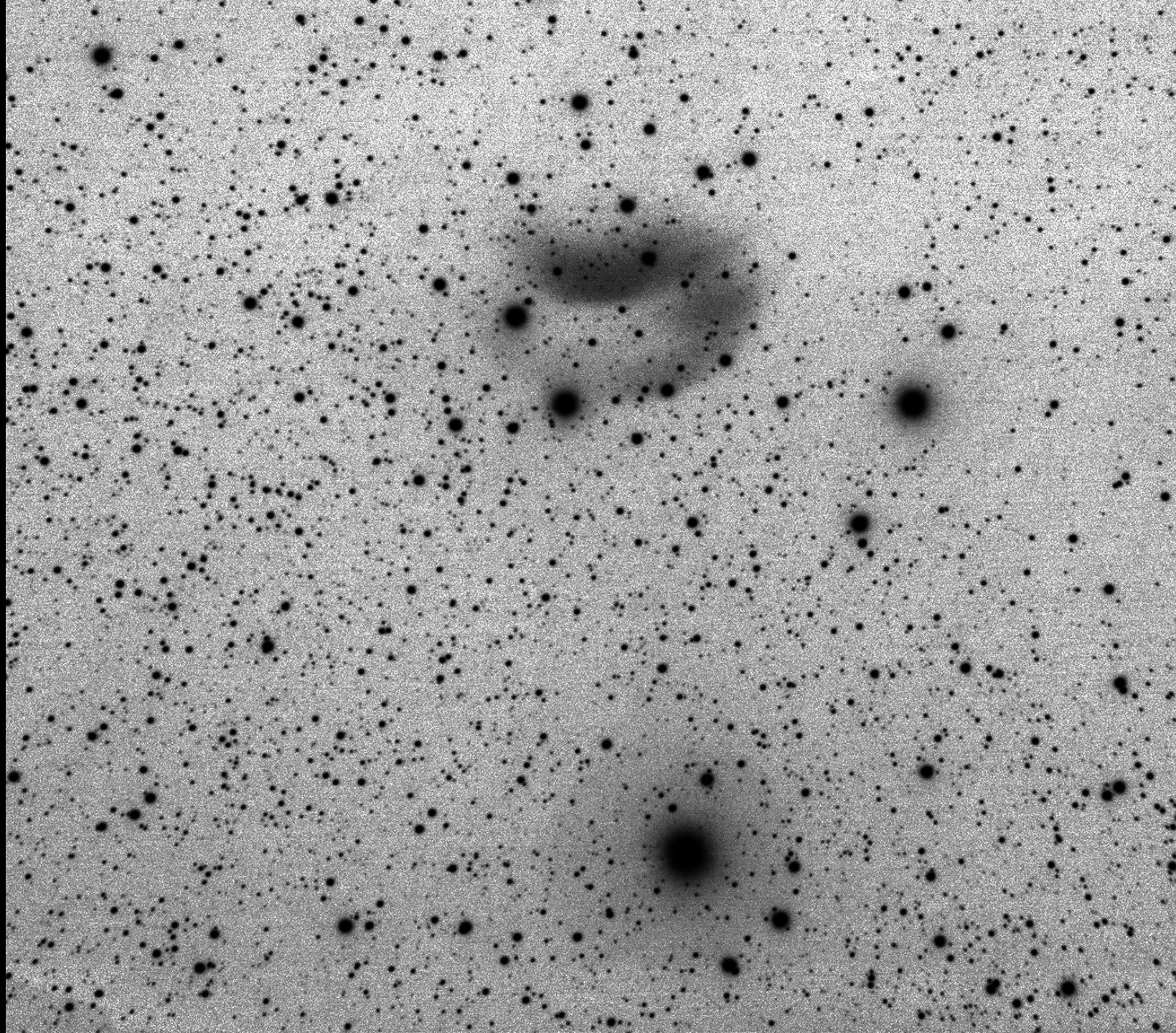




H-alpha



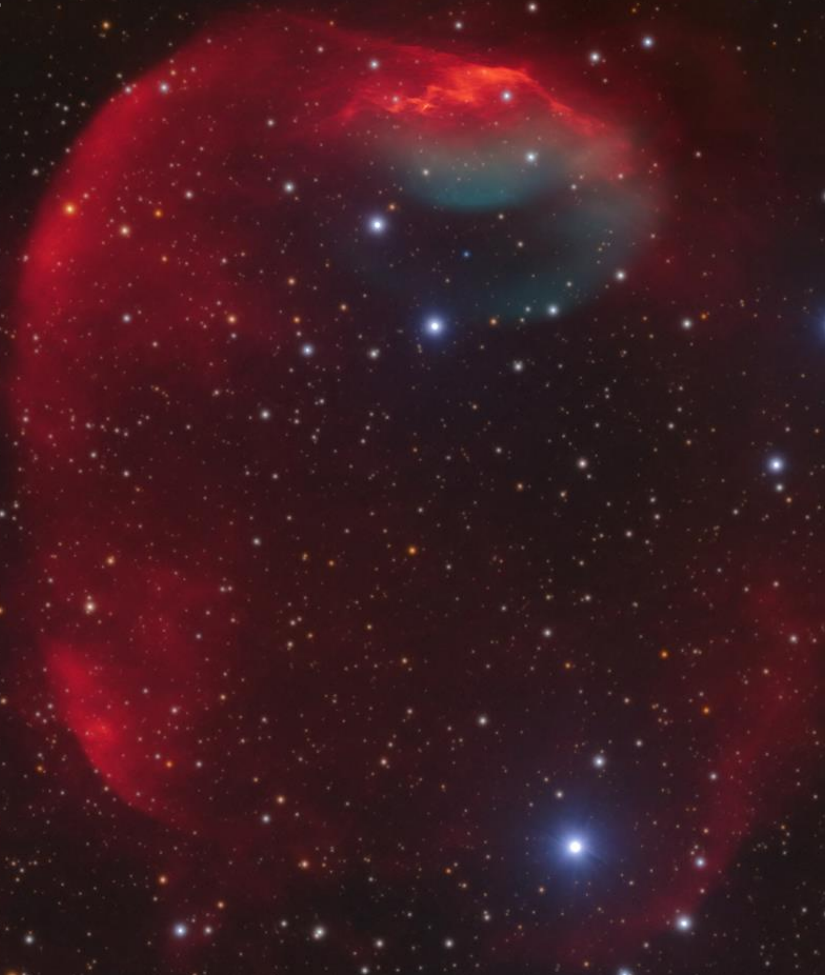
OIII





StDr 99

196 hours 15 minutes





Why aren't professional astronomers discovering these PNe?

- Very faint
- Deep imaging needed
- Limited access to professional telescope time
- Professional telescopes have high focal ratios





“The detection limit for an extended, relatively homogenous, object does not depend on the telescope diameter, but on its focal ratio.”

Romano L.M. Corradi  
Director  
Gran Telescopio Canarias  
22nd March 2024



## Abell 14

B9 star + companion

2 high-mass progenitors

Where is the mass?





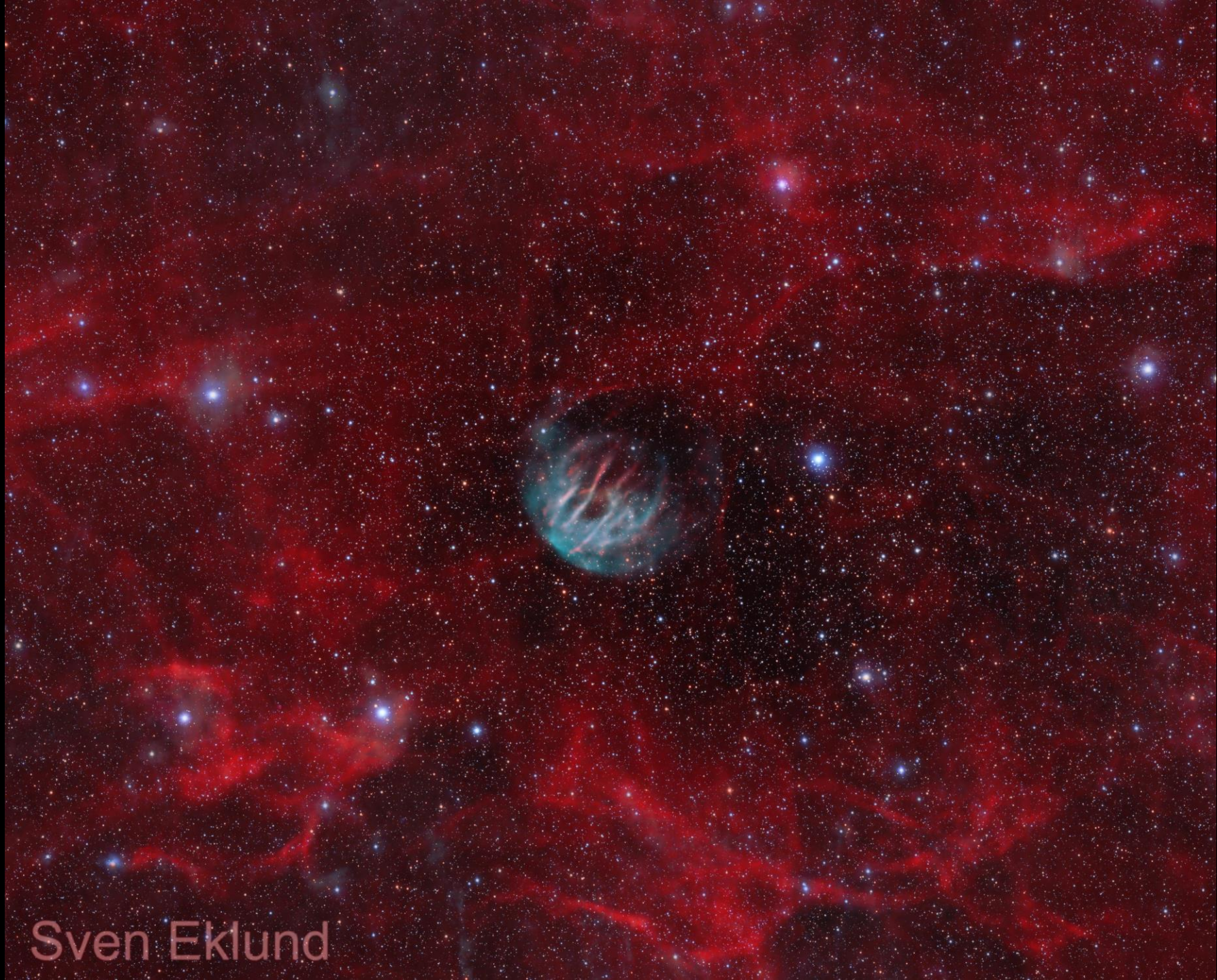








Ek 5



Sven Eklund