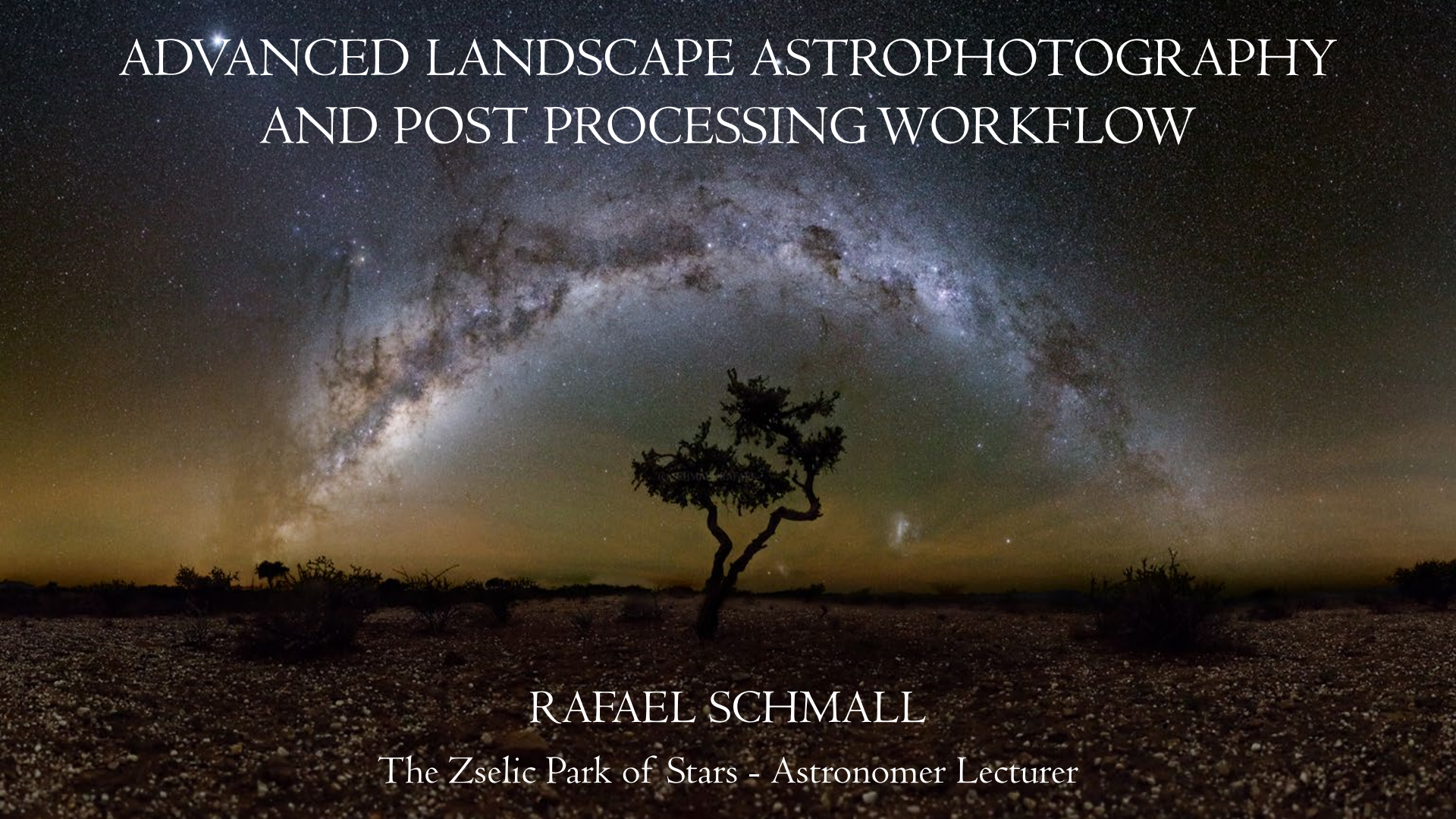


ADVANCED LANDSCAPE ASTROPHOTOGRAPHY AND POST PROCESSING WORKFLOW



RAFAEL SCHMALL

The Zselic Park of Stars - Astronomer Lecturer

Who I am

Astronomer Lecturer

Nighttime photographer (starry nightscapes & astrophotographs)

NASA – APOD / National Geographic (HUN) Astrophoto of the Year
In the Land of Legends exhibition / HAA Meteor images



The Zselic Park of Stars



My job at the Zselic Park of Stars:

- Planetarium presentations
- Showing meteorite collection & light pollution problems
- Guided observation with telescopes
day & night (when the sky is clear)
- Guided night tours in the forest



My freetime : creating nightscapes and astrophotos



My holidays : Hungarian star party

VEGA Astronomical Association



Nightscapes... Like this:





Or something like this:

Full dome panoramas





„Normal” panoramic images



Milky Way arcs



Vertical panoramas



When I'm not moving...





...I gather hundreds of exposures with telescopes.

Or travel 9000 km south to do this



My thinking method for the landscape astrophotos

Taking images under the sky, and not creating by computer.

Avoiding digital aberrations. (basic errors, none atmosphere etc.)

Applying classical composition rules. (golden ratio, rule of thirds...)

Prefer panoramas for increasing the Milky Way details.

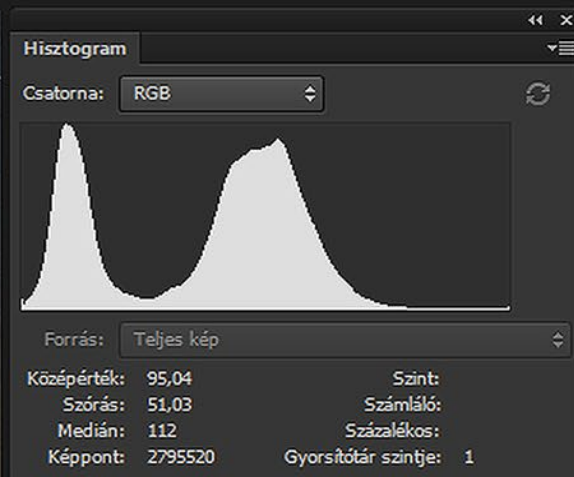
Creating a foreground mask.

Using curves, saturation, highpass under the processing.

Scientific and artistic approach.



The key to easy processing:



My typical gear and settings: 24mm f1.4 lens & Canon EOS 6D

10 seconds (fast for panoramas)
ISO10000 (enough information even from the foreground)

f2 (stop down the lens to reduce some c.a.)

24mm (or 50, or 85, or 135)

Full dome panoramas:
~60panels (24mm FF)
~120panels (50mm FF)



Before



A long-exposure photograph of a night sky. The Milky Way galaxy is visible as a bright, cloudy band of light stretching across the sky from the lower left to the upper right. Dark, silhouetted clouds are scattered throughout the galaxy. In the foreground, a dark, flat landscape is visible with several small, dark trees and bushes. A single, tall, bare tree stands prominently in the center of the frame. The sky is filled with numerous stars, and the overall color palette is dominated by the deep blues and blacks of the night sky, with the warm, yellowish-white light of the Milky Way providing a central point of interest.

After

Let's do this together!